



BROOK GAMBLE



9 Hawksbridge Close
, Eastbourne, BN22 0RJ

Brook Gamble are delighted to offer to the market this extremely well presented extended and refurbished detached bungalow in sought after Lower Willingdon. The bungalow boasts 3 good sized Bedrooms, with a luxury En-Suite Shower Room to the Master Bedroom. A particular feature is the large open plan Lounge and Kitchen with bi-fold doors leading directly to the Rear Garden. The gardens are considered ideal for relaxing and entertaining with the large side patio garden boasting its own Bar. Being situated in a cul-de-sac location, the bungalow further benefits from a Driveway and Garage and is within a short distance of Freshwater Square Shops and nearby bus services offering easy access into Eastbourne and Surrounds. Viewing is considered essential to fully appreciate this wonderful home. Sole Agents.

£425,000

9 Hawksbridge Close

, Eastbourne, BN22 0RJ



- Stunning Refurbished Extended Bungalow
- Utility Room
- Cul-De-Sac Location
- Open Plan Lounge/Kitchen
- Gardens To Three Sides
- Close Shops & Bus Services
- En-Suite To Master Bedroom
- Driveway & Garage
- Sole Agents

Entrance Porch

9'3 x 3'5 (2.82m x 1.04m)

Lounge

14'1 x 17'2 (4.29m x 5.23m)

Kitchen

14'1 x 12'3 (4.29m x 3.73m)

Utility Room

8'10 x 3'2 (2.69m x 0.97m)

Inner Hallway

Bedroom 1

11'9 excluding door recess x 12'3
(3.58m excluding door recess x 3.73m)

En-Suite Shower Room

Bedroom 2

10'9 x 9'9 (3.28m x 2.97m)

Bedroom 3

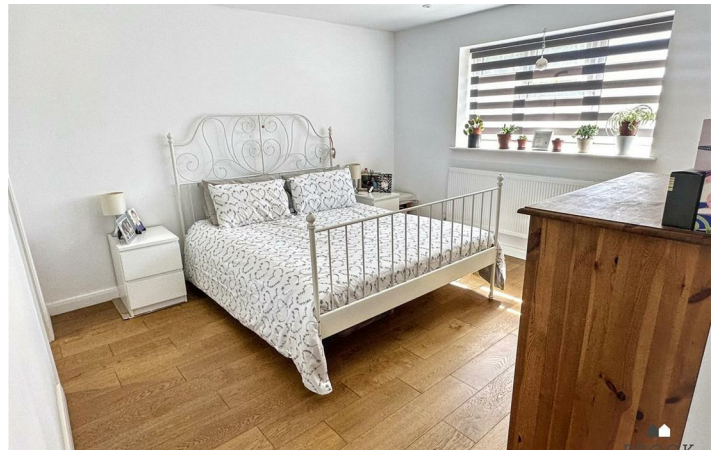
10'10 x 7' (3.30m x 2.13m)

Bathroom

Outside



Directions





Floor Plan

These particulars, whilst believed to be accurate are set out as a general outline only for guidance and do not constitute any part of an offer or contract. Intending purchasers should not rely on them as statements of representation of fact, but must satisfy themselves by inspection or otherwise as to their accuracy. No person in this firm's employment has the authority to make or give any representation or warranty in respect of the property.

